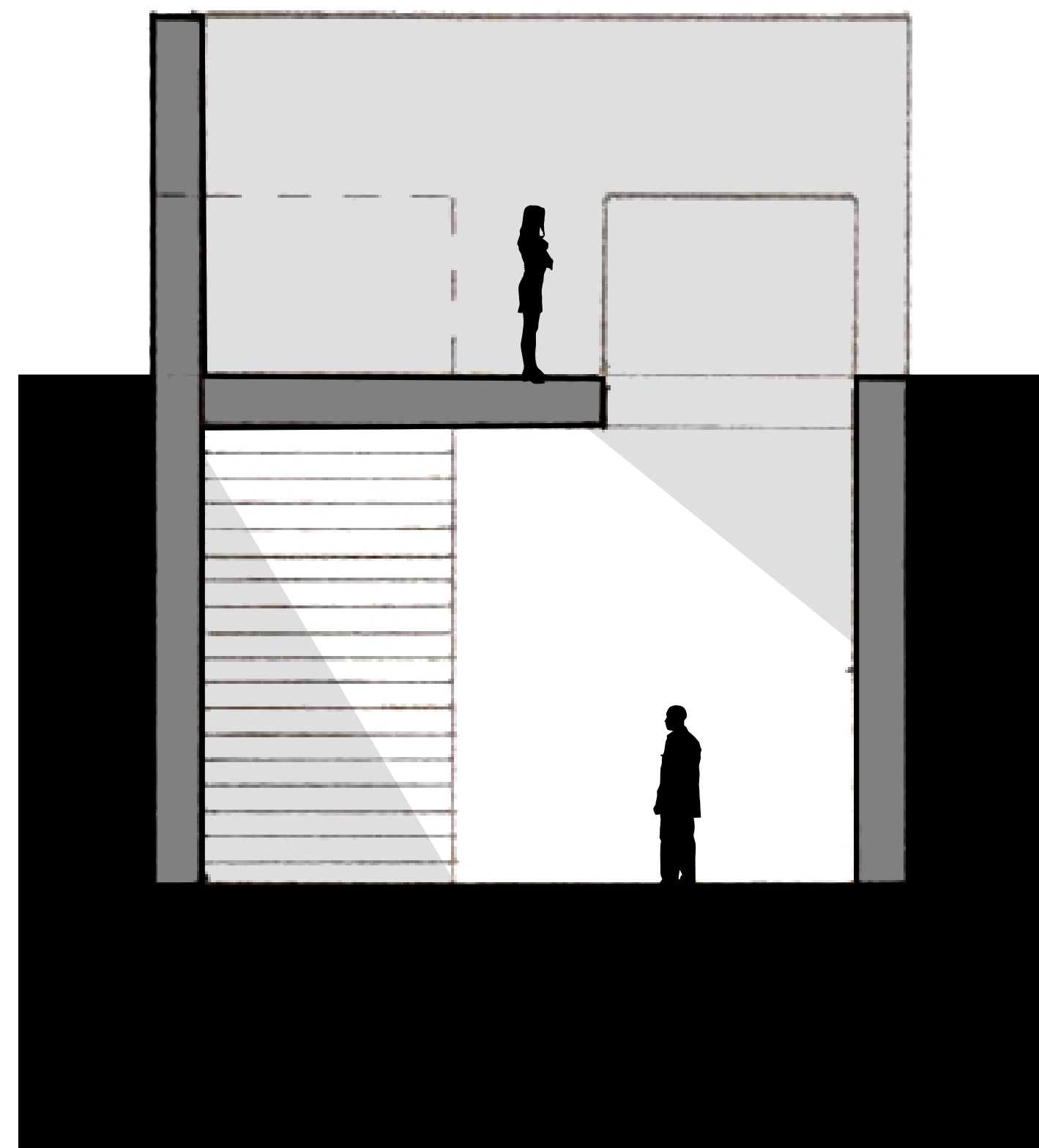


B. Interior Section/Elevation  
looking North 10:00 A.M

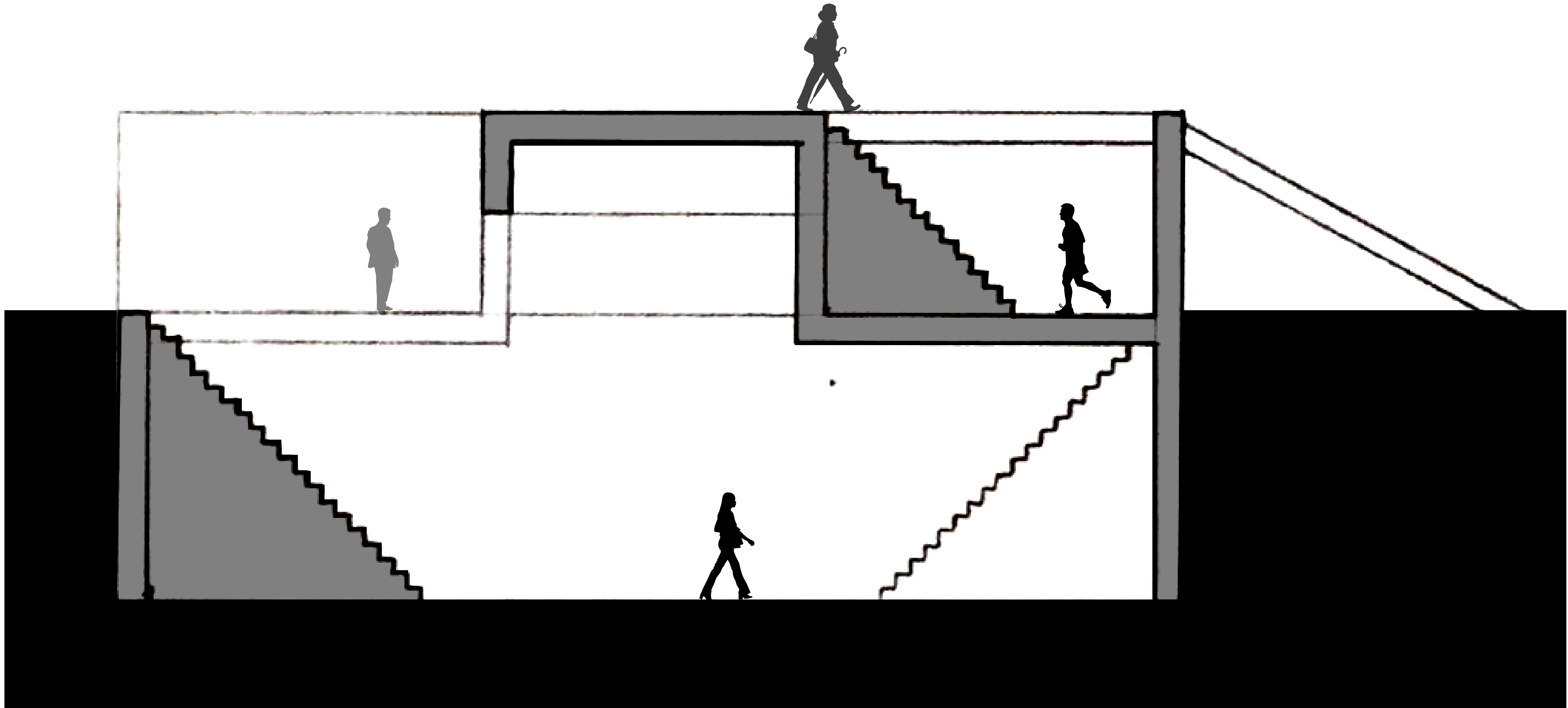


B. Interior Section/Elevation  
looking North 4:00 P.M

# Circulating Between Ground and Sky

This project is an exploration of ground and sky relationship. This relationship is explored by circulating between both mediums in the same building. As one approaches the entrance they are met by a relatively open small space. In this space there is a staircase that descends underground to a much larger space. Down here one will find another staircase that rises back up to a much more compact

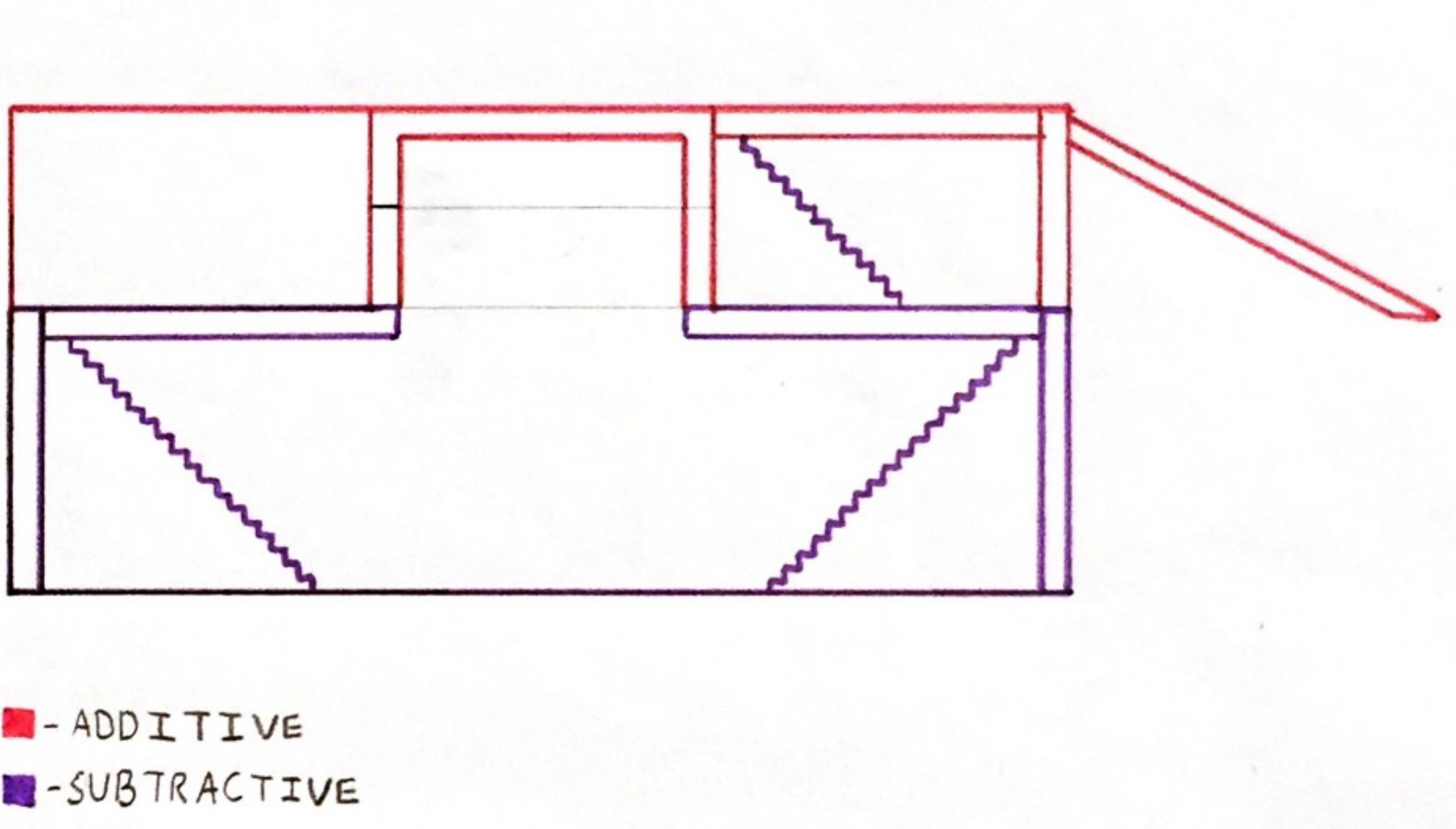
space that is at ground level. In this space there is a much smaller staircase that leads to a space that is rather small, but feels very large because it is elevated and not enclosed at all. As the sun moves across the sky, different parts of the space are illuminated. This leads to a space that is constantly changing.



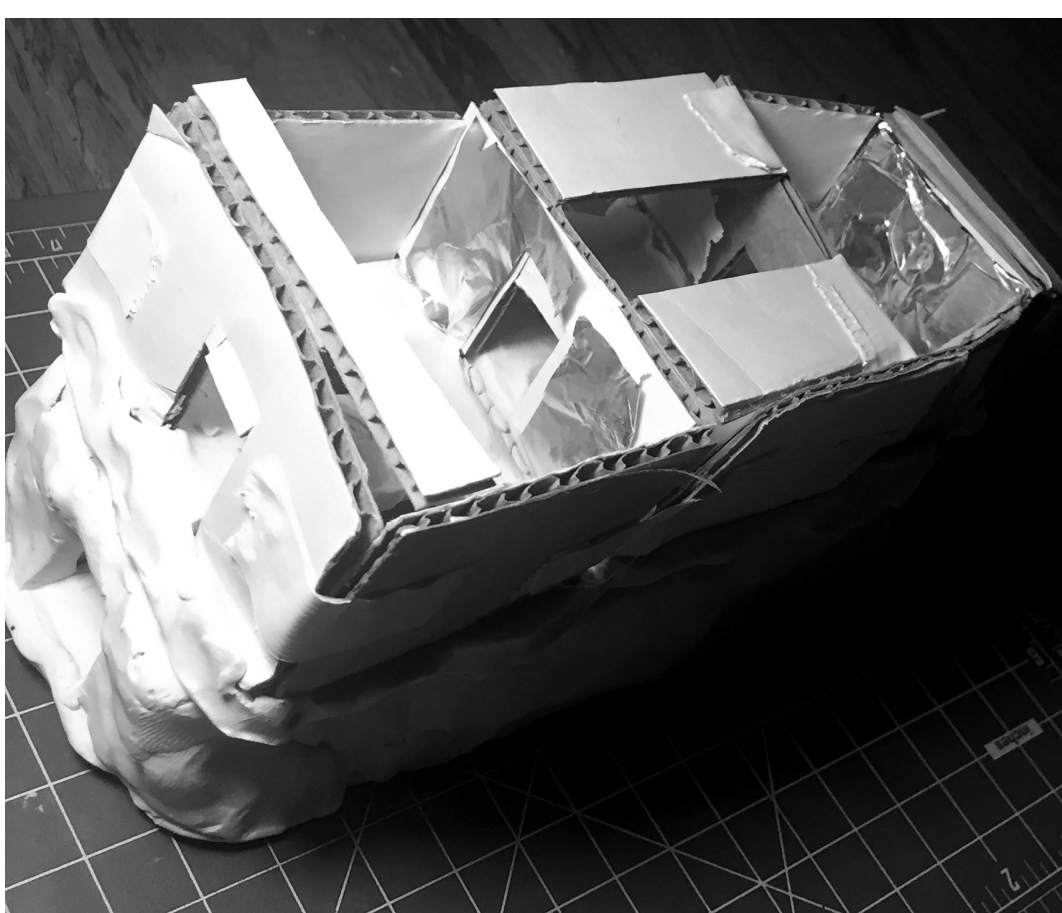
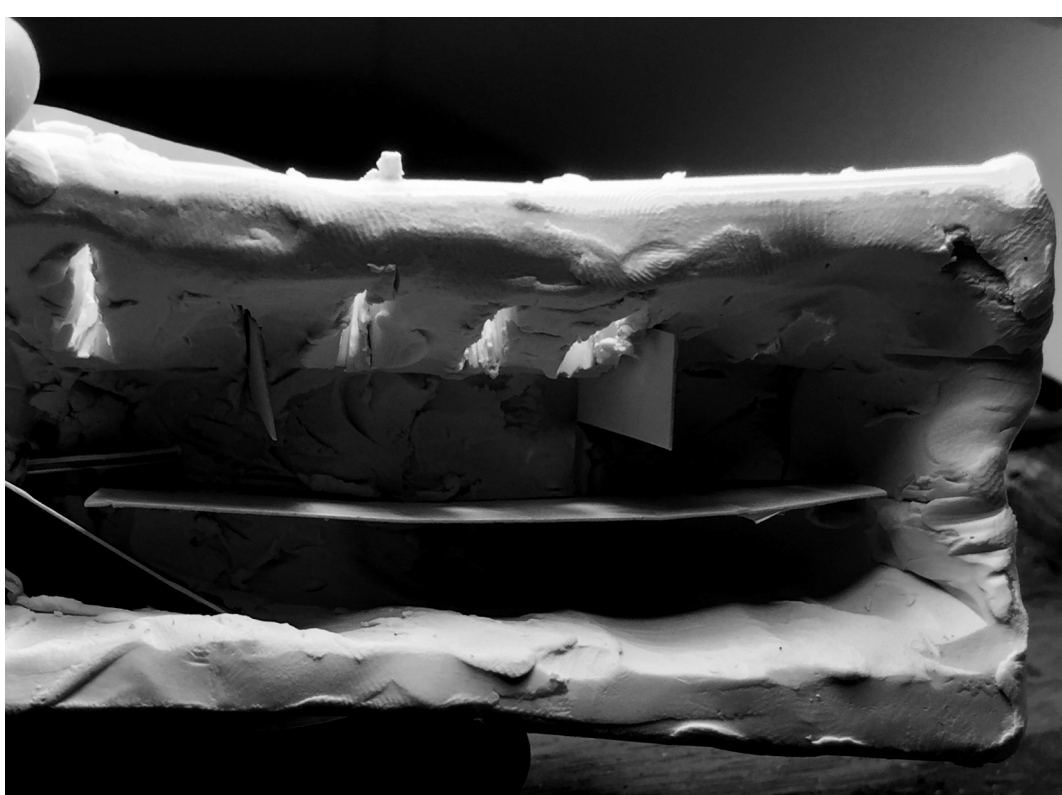
A. Interior Section/Elevation  
looking West

SCALE: 1/8" = 1'-0"  
0' 2'-0" 4'-0" 8'-0"

Additive/Subtractive



The Process



Circulation Diagram

